



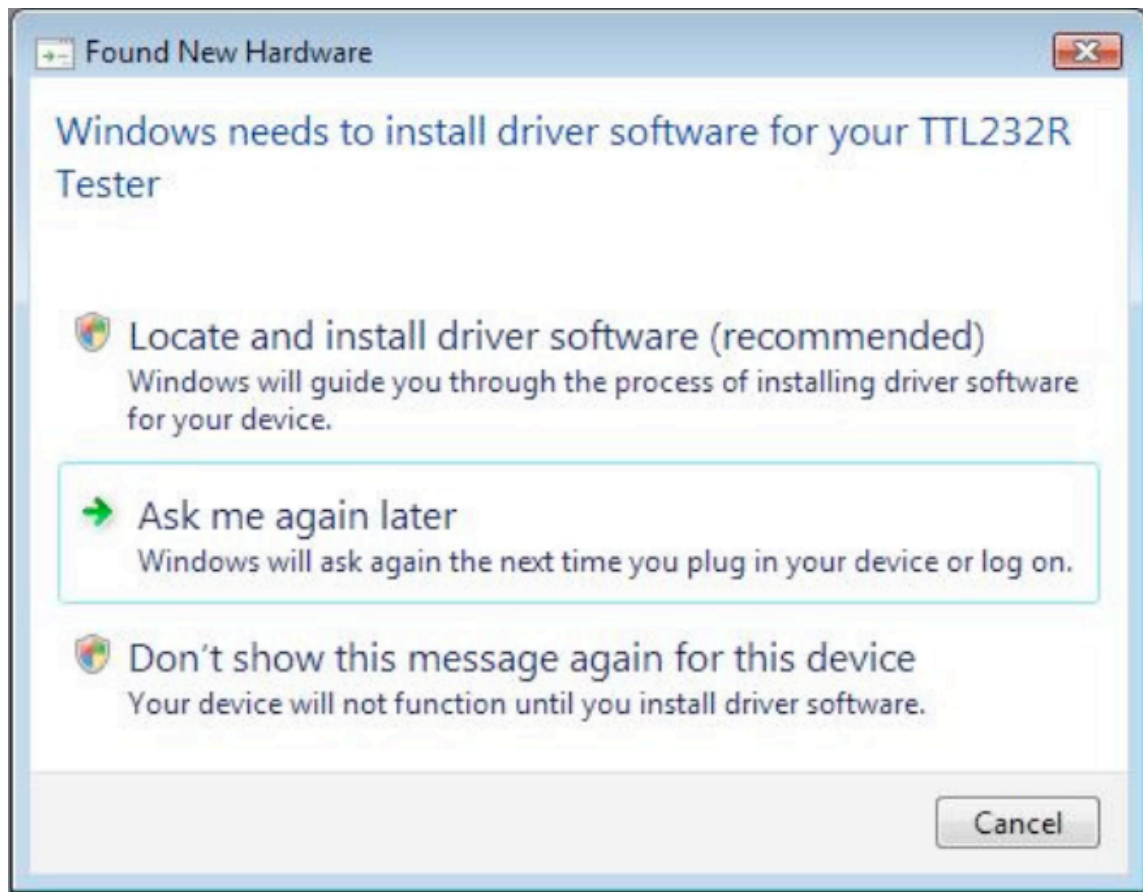
Windows Vista Driver Installation Guide

To install the device drivers for the Minitor Programmer under Windows Vista, follow the instructions below:

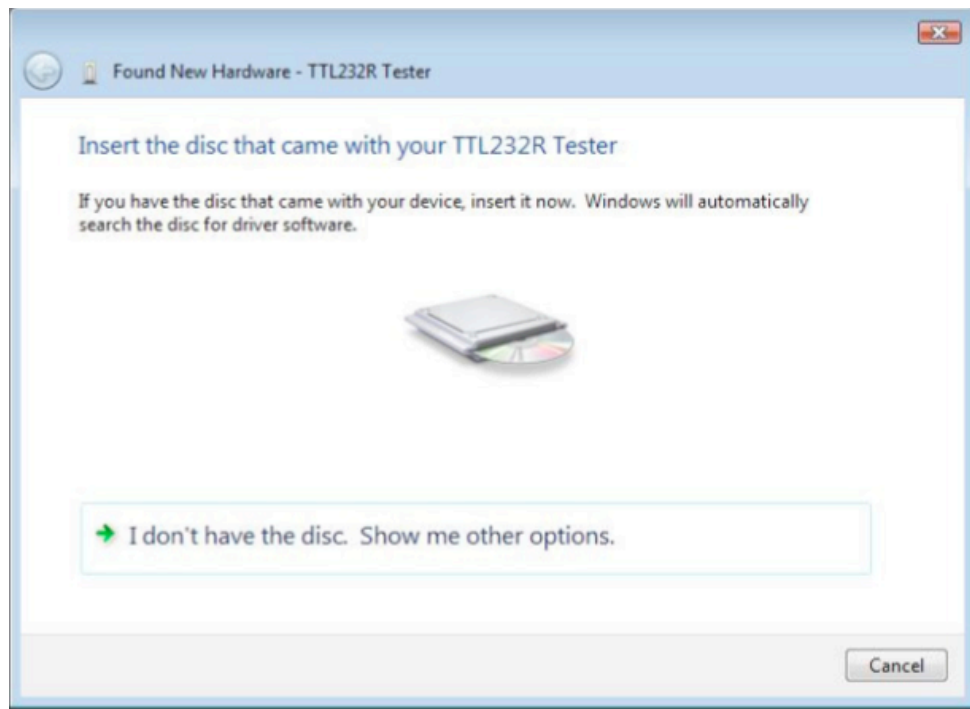
Connect the Minitor Programming device to a spare USB port on your PC.

If there is an available Internet connection, Windows VISTA will silently connect to the Windows Update website and install any suitable driver it finds for the device in preference to the driver manually selected. If no suitable driver is automatically found then the following procedure should be followed.

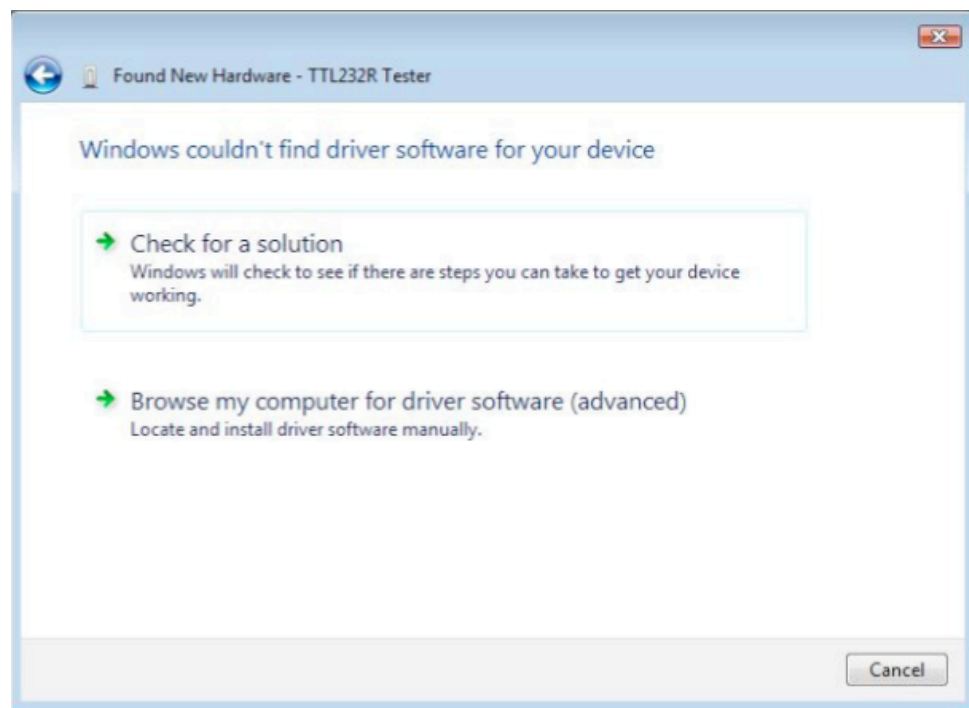
Windows Found New Hardware Wizard will launch. If there is no available Internet connection or Windows VISTA is configured to ask before connecting to Windows Update, the screen below is shown. Select "Locate and install driver software (recommended)" from the options available to proceed with the installation.



When "Locate and install driver software (recommended)" is selected the following screen will appear.

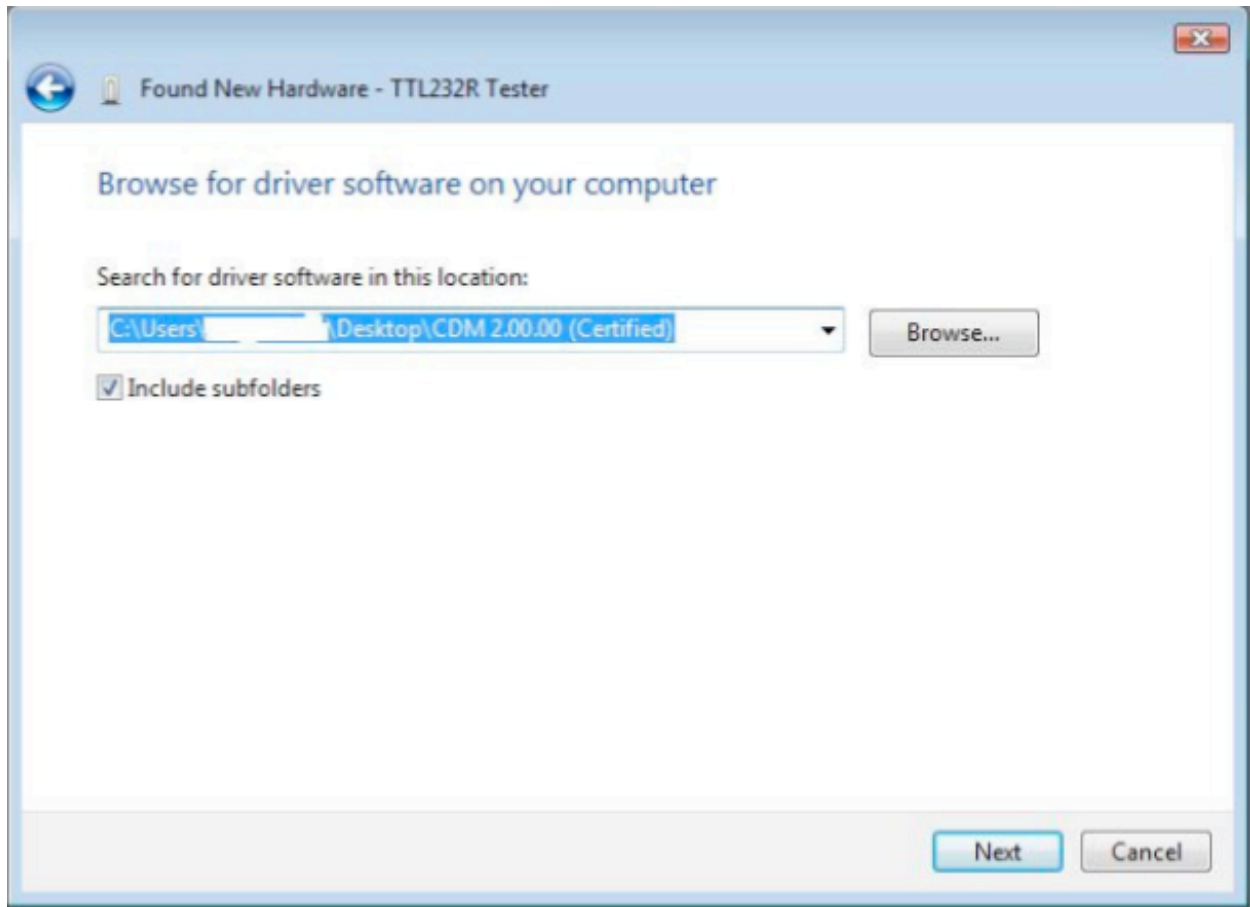


Select "I don't have the disk. Show me other options". The next screen will appear.

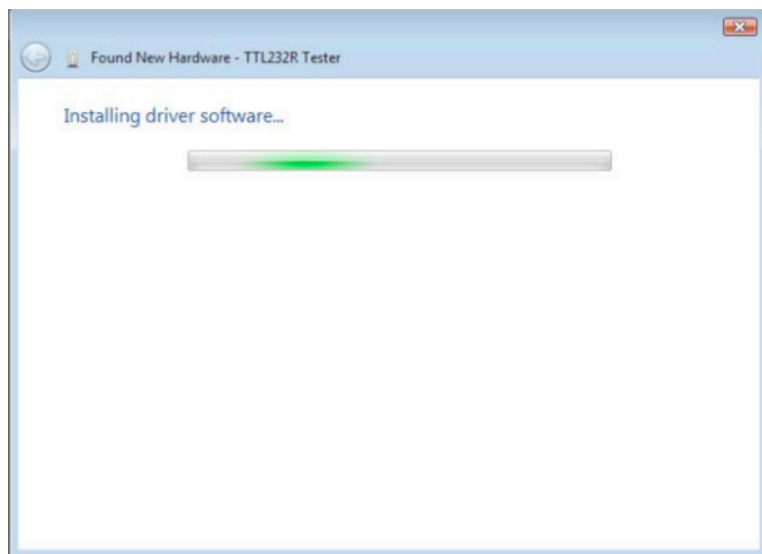


Select "Browse my computer for driver software (advanced)".

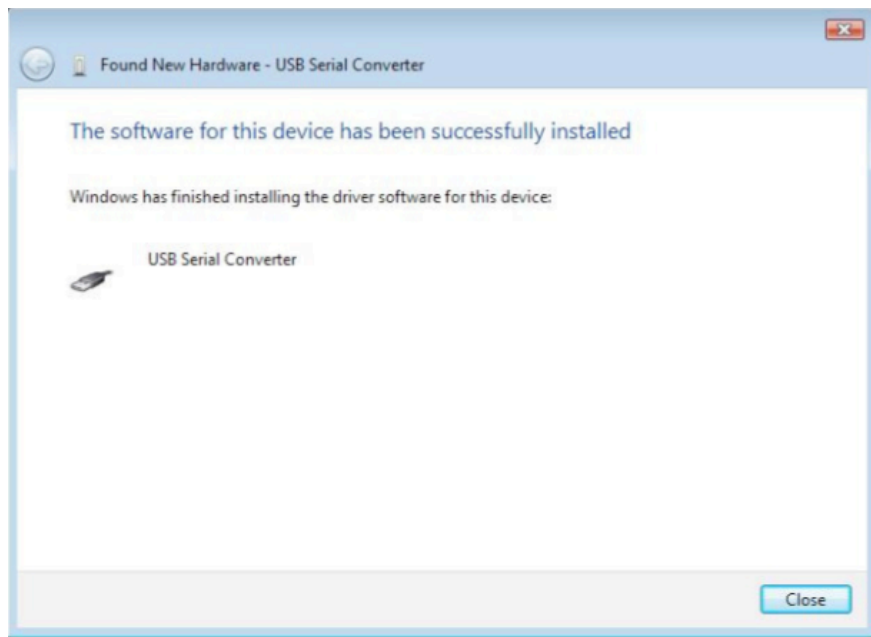
The next screen will appear. Browse to the folder where the driver has been stored (when uncompressed) and press "Next". The example below above uses a folder on the desktop.



The next screen will appear.

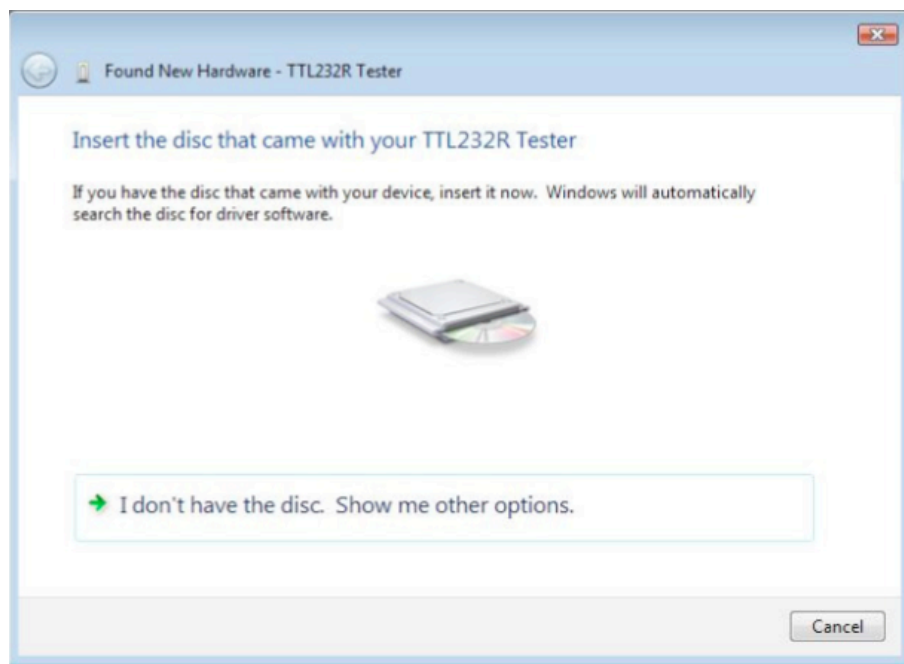


This screen will automatically complete and then change to the one below:

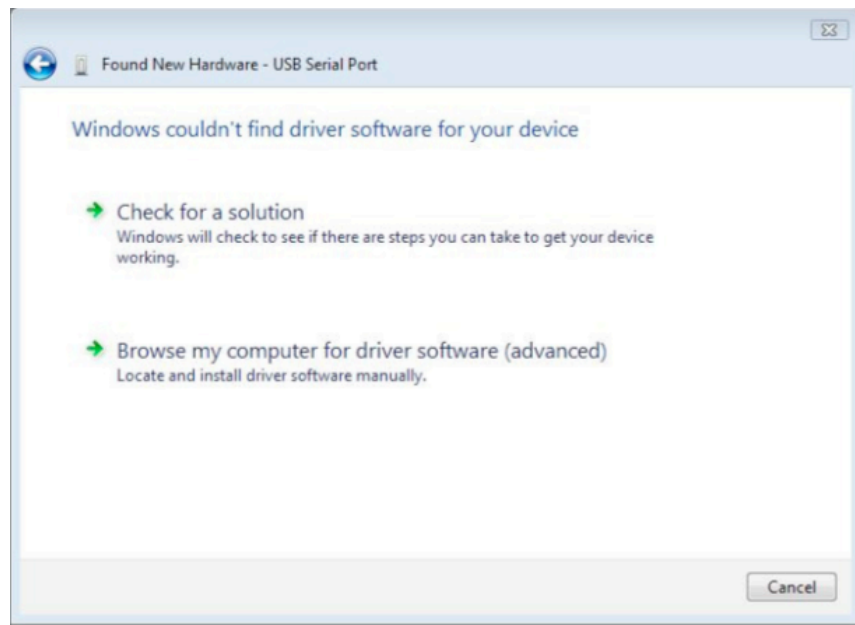


The bus layer of the driver is now installed.

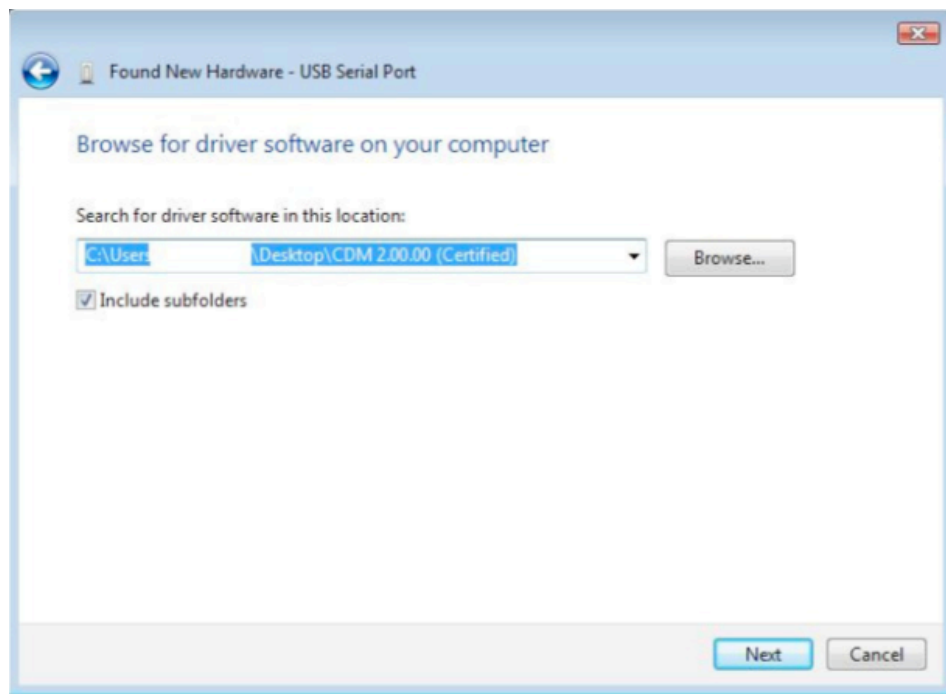
When the bus driver has completed, the process is repeated for the serial port layer of the driver. That is, Windows will automatically detect a serial port device as a new device. It will then prompt, as before, for the location of the device driver by displaying the "Found new hardware" wizard again and it is necessary to repeat the same process to install the serial port driver.



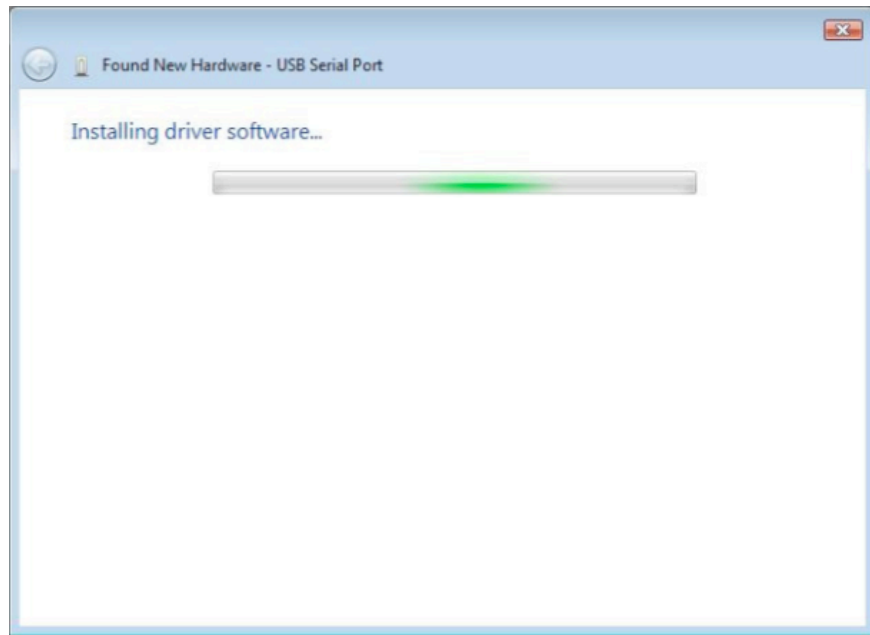
Select "I don't have the disk. Show me other options"
The next screen will appear.



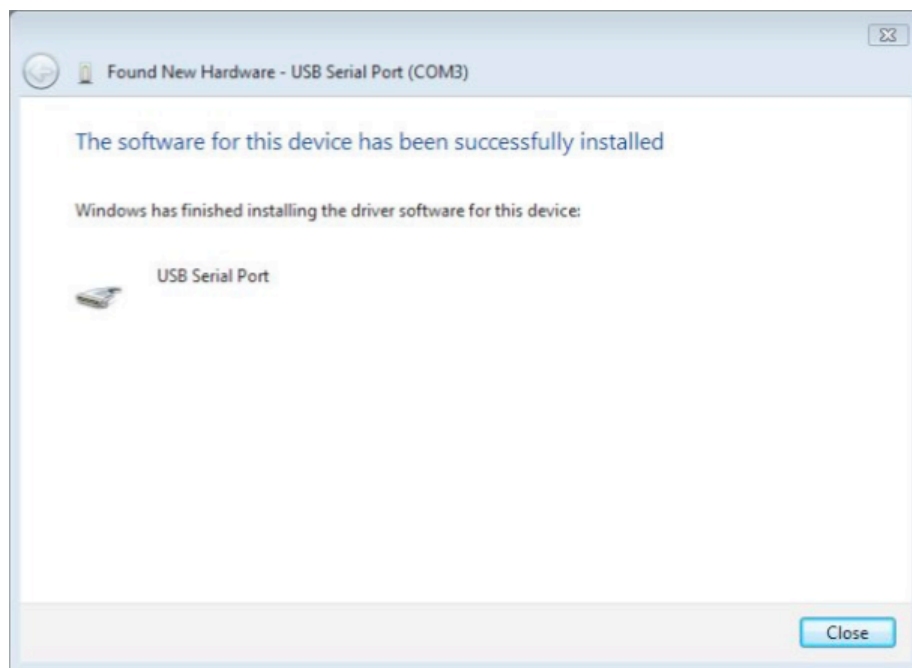
Select "Browse my computer for driver software (advanced)".
The next screen will appear. Browse to the folder where the driver has been stored (when uncompressed) and press "Next"
The example shown below uses a folder on the desktop.



The next screen will appear.

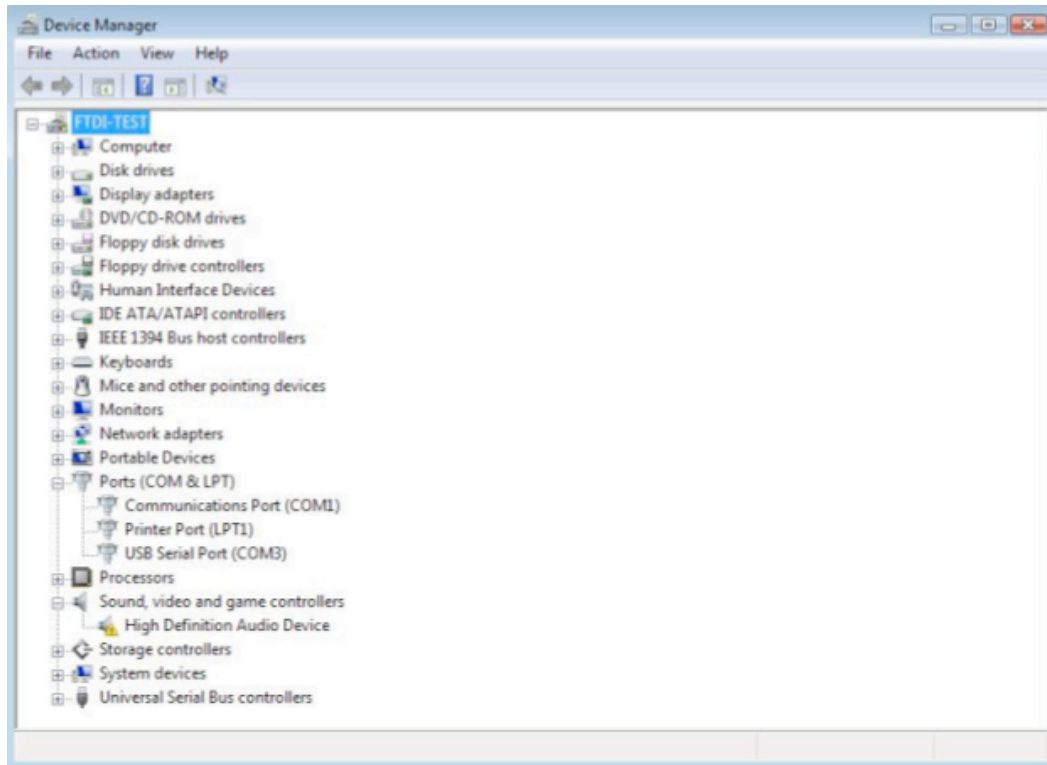


This screen will automatically complete and then the following screen will appear.



After the driver is installed it is important to determine which COM port has been assigned to the device for configuring the application that will use the device.

Open the Device Manager (located in "Control Panel\System" then select the "Hardware" tab and click "Device Manager") and select "View > Devices by Connection", the device appears as a "USB Serial Converter" with an additional COM port with the label "USB Serial Port".



This screen shows the device connected to COM3. It may be different on your computer. Whatever COM port is showing is the COM port that you will set your Minitor Programming software setting to.